

2025 INTERNATIONAL PLOWING MATCH AND RURAL EXPO

Dear Exhibitor:

WELCOME to the 2025 International Plowing Match and Rural Expo!

Niagara Falls, Ontario is known around the world as one of the “Seven Wonders of the World” and that’s a phenomenal recognition. **BUT THERE IS SO MUCH MORE TO NIAGARA REGION** than pretty water flowing downhill over rocks.

The Regional Municipality of Niagara, also known as Niagara Region, is located within Southern Ontario and occupies most of the Niagara Peninsula. The Niagara Region is bounded to the north by Lake Ontario and to the south by Lake Erie. The region is bordered to the west by Haldimand County and the City of Hamilton with its eastern boundary at the Niagara River which is also the international border with the State of New York (United States).

While the unique natural landscapes make the area a natural tourist attraction, agriculture is a dominant industry. Especially known for its grape production and resulting unique wineries, the area is also known for its outstanding tender fruit crops. Impressive beef, dairy, cash crop farms and other specialty crops are known world-wide for their quality and technological advancements

Tourists from around the world make Niagara Region their second home ---- and for many, it’s a year-round destination.

THE 2025 INTERNATIONAL PLOWING MATCH AND RURAL EXPO will uniquely showcase the past, present and future in a wide-range of exhibits that will feature agriculture, plowing, food, tourism, agri-tourism, rural living, technology and so much more.
--

Along with the Ontario Plowmen’s Association, this year’s IPM is being hosted by the Township of West Lincoln and the Region of Niagara with its additional eleven municipalities.

This year’s Local Organizing Committee is an energetic group of talented and enthusiastic individuals. Each volunteer brings their skills and dedication to the shared goal of creating a dynamic event for all participants. Couple this group with the enthusiastic OPA Advisory Councillors, Directors and Staff and you have the formula for success.

The IPM Tented City will be built on the new West Niagara Fairgrounds. Transforming this site will provide many new opportunities ---while at the same time presenting a few challenges. A big Thank You goes to the farmers in the area who have provided their land for this amazing event.

Because of these activation changes, a number of rules have had to be changed. We urge you to read this Information Book carefully. The changes are necessary to maintain the integrity of the land within the Fairgrounds and beyond.

Preference for water supplies will be given to food vendors and those exhibits showcasing livestock. Premier Event Tent Rentals is the Official Tent Supplier to IPM 2025 and will be providing 24-hour service on-site for the duration of the event. A beautiful selection of landscaping supplies will be offered but be sure to order early for the best selection. You will be required to leave the landscaping products in the pots rather than actually planting them. **PLEASE NOTE:** **Once confirmed, we will send your lot location/exhibit location to the various Service Providers (Landscaping, Hydro, Tent Supplier, Building Permit, etc.)**

Please be sure to review the form for the Tent/Building permit application process. All exhibits with any size tent or building will need to complete this form. Be sure to show the location of your tent within your lots(s). If you have questions about this form, please call the OPA Office.

PLEASE respect the 5:00 p.m. Departure Time on Saturday, September 20th. We will not allow the increased risks of accidents to our exhibitors or our visitors because of Exhibitor early-departure traffic.

Again we ask that you Please review the Rules and Regulations included on the following pages. **SOME RULES HAVE CHANGED!!!!!!!** We've tried to include answers to any questions you might have. We trust that by including as many details as possible now, your planning for and experience at the IPM will be successful and enjoyable.

We encourage you to book your Exhibit Space and related services EARLY and plan for another successful International Plowing Match and Rural Expo. WELCOME. TO IPM 2025.

If you have any questions, please do not hesitate to contact us.

Yours truly,
ONTARIO PLOWMEN'S ASSOCIATION

Cathy

Cathy Lasby
Executive Director/
Exhibits & Sponsorship
Co-ordinator
cathy@plowingmatch.org

Sharon

Sharon McCorquodale
Programme Co-ordinator
admin@plowingmatch.org

Melissa

Melissa Gamble
Financial Co-ordinator/
Site Co-ordinator
financial@plowingmatch.org

IMPORTANT PLANNING DATES

2025 International Plowing Match and Rural Expo

BE SURE TO BOOK YOUR EXHIBITOR

SPACE EARLY...AND SAVE

JULY

to 15th **INDOOR & OUTDOOR EXHIBITORS -
BOOK EARLY AND SAVE---SEE
APPLICATIONS FOR SAVINGS**

AUGUST

- 1 Permission Request to Dig or Excavate due
- 1 Application for Special Attractions
- 1 Application for On-Site Residency due
- 1 Tent Rental Order Form to Premier Events Tent Rentals (deadline for discounted pricing)
- 1 Last day to save on Electrical Services
- 5 Deadline for listings in Official Show Guide
- 5 Health Unit applications due----Food Concessions
- 6 Be sure to order Landscaping early
- 12 Advertising Materials Deadline Official Show Guide - BETTER FARMING
- 26 Order Forms for Additional Passes due
- 26 Exhibitor Products and Services Orders due

SEPTEMBER

- 2 Parade Entry form due
- 11 Outdoor Exhibitors may begin move-in
- 11 Forklift Service will commence
- 11 Site Protection in Tented City commences (Noon)
- 12 Food Vendors may move in/set up
- 13 Indoor Move-in may begin set up (after 12 noon)
- 14 WORSHIP SERVICE
- 15 All exhibitors must be completely set up ready for inspection (by 5:00 p.m.)
- 15 All delivery trucks etc. must be removed and set up complete by 5:00 p.m.
- 16 OPENING DAY
- 19 Celebration of Excellence Banquet including the crowning of the 2025-26 Ontario Queen of the Furrow
- 20 CLOSING DAY
- 21 Indoor Exhibits must be removed from site (by Noon)
- 22 Site Protection on Site concludes (Noon)
- 30 Forklift Service concludes

OCTOBER

- 3 All exhibits must be completely moved off the grounds

2025 INTERNATIONAL PLOWING MATCH AND RURAL EXPO

GENERAL INFORMATION

1. ONTARIO PLOWMEN'S ASSOCIATION

519-767-2928 1-800-661-7569 Fax: 519-767-2101 www.plowingmatch.org

Cathy Lasby Executive Director, Exhibits
 & Corporate Partnership Co-ordinator
 cathy@plowingmatch.org
 OR

Sharon McCorquodale Programme Co-ordinator
 admin@plowingmatch.org

2. INVITATION TO EXHIBITORS

In keeping with the mandate of the Ontario Plowmen's Association (OPA), exhibitors related to agriculture, food, education, environment or rural living are invited to participate in the International Plowing Match and Rural Expo. The OPA reserves the right to accept, decline or limit the numbers and types of exhibitor applications. Unless authorized by the OPA, no used, second-hand or rebuilt articles or goods are permitted for display and/or sale by the exhibitor. Only those items identified in the contract application may be displayed and/or sold. **Sub-letting of space is strictly prohibited.**
Generators are not allowed.

3. HOURS OF OPERATION

Tuesday, September 16	8:30 a.m. to 5:00 p.m.
Wednesday, September 17	8:30 a.m. to 5:00 p.m.
Thursday, September 18	NEW: 8:30 a.m. to 7:00 p.m.
Friday, September 19	8:30 a.m. to 5:00 p.m.
Saturday, September 20	8:30 a.m. to 5:00 p.m.

Exhibits are to remain intact until the close of the show at 5:00 p.m. on Saturday, September 20, 2025.

DUE TO THE INCREASED RISKS OF ACCIDENTS TO OUR EXHIBITORS AND VISITORS, NO EXHIBITOR IS ALLOWED TO LEAVE PRIOR TO 5:00 P.M. ON CLOSING DAY.

4. APPLICATIONS

APPLICATIONS (WITH PRICES) MAY BE FOUND STARTING AT "B1".

Methods of payment: Credit card (Visa or Mastercard), cheque, cash, or money order.

INDOOR & OUTDOOR EXHIBITORS - BOOK BY JULY 15th AND SAVE.

After September 1st, 2025, credit card, cash or certified cheque only. **Full payment MUST be received prior to set up.**

The Ontario Plowmen's Association reserves the right to release any rental space that has not been paid in full and any deposit paid will not be refunded. **Payment in full and proof of insurance must be received before admission tickets can be distributed and setting up will be permitted.**

5. HEALTH AND SAFETY

The Ontario Ministry of Labour advises that workers installing temporary structures, tents and buildings on the IPM site fall under the scope of the Occupational Health and Safety Act, Ontario Regulation 213/91.

Exhibitors must ensure all individuals work in compliance with health and safety procedures as legislated by this Act. For the protection of both the general public and exhibitors, all demonstrations and static exhibits must conform to accepted safety practices (i.e., safety barriers around moving equipment, bracing on extended loaders, use of proper extension cords, etc.)

Helium filled balloons will not be permitted on site.

6. NO SMOKING OR VAPING OR CANNABIS AT THE INTERNATIONAL PLOWING MATCH AND RURAL EXPO

For years, the IPM has been a family-friendly and **smoke-free** event. This year's event in the Region of Niagara is no different. As per the government rules, **SMOKING & VAPING WILL NOT BE ALLOWED on the IPM properties.**

- “smoking” means smoking (inhaling and exhaling) **or holding lighted tobacco or cannabis** (medical or recreational)
- “vaping” means inhaling or exhaling vapour from an electronic cigarette (e-cigarette) **or holding an activated e-cigarette**, whether or not the vapour contains nicotine

Attendees---Visitors/Exhibitors/Event Staff/Volunteers

Signs will be placed at the entrance to the IPM letting people know that this is a Smoke-Free, Vaping-Free and Cannabis-Free event. If attendees wish to smoke or vape they must leave the grounds of the IPM and return to their vehicle. Anyone who is found to not be obeying the prohibition on smoking and vaping will be removed from the Match grounds and barred from re-entry.

Food vendors

In accordance with the *Smoke-Free Ontario Act*, all food vendors that have tables that are for attendees to eat and drink must have ‘No Smoking and No Vaping’ signage on their tables. Signage may be provided by the Health Unit.

Signs are also required in every washroom.

Event staff and other vendors with RV Trailers

For staff and owners of booths and events at the IPM who have RV trailers that will be their own private dwelling for the duration of the Match, smoking and vaping are permitted inside of RV trailers. However, if any part of the RV trailer is being used as a workplace, then the entire RV trailer must be smoke-free and vaping-free.

7. **EXHIBITOR PARKING**

- Exhibitors will receive GREEN Vehicle Passes that allow the exhibitor to park their vehicle in the green parking areas near the Tented City. A limited number of additional green passes (pro-rated according to exhibit size) are available at no charge.
- **Due to the design of Tented City for IPM 2025, there will be limited on-site parking. A special RED VEHICLE PASS PARKING LOT is being planned. There will be a limited number of Service Roads (not like in previous years). For Indoor Exhibitors, the Red Pass allows you to park in the special Red Sticker Parking lots also. Parking is not allowed on any Service Roads, Streets or Avenues.**
- **SPECIAL SHUTTLES may be made available to all exhibitors.**

Vehicular Traffic is not allowed on “Streets” or across other Exhibitor lots before or during the week of the Show.

- **IPM Volunteers will direct you to your lot during set up.**
- Vehicular Traffic in Tented City will be limited to authorized emergency, service and shuttle vehicles.

In the event of inclement weather, the Management reserves the right to divert traffic from the Tented City to an adjoining parking area.

8. **EXHIBITOR PASSES**

- Exhibitors will receive daily admission passes for each day according to the amount of space purchased (see Exhibitor Application).
- Additional Exhibitor passes (for Staff) may be purchased for \$17.70 each plus HST in advance (see enclosed form) or at the OPA Show Office at IPM 2025 from Thursday, September 11th to Saturday, September 20th (during regular office hours – 8:00 am to 5:30 pm).
- **NOTE:** All exhibitors entering Tented City each require a daily admission pass.
- **On-Site residents:** Potential on-site residents must apply as a very limited number of spaces for on-site residents will be possible this year. Submitting this application will not necessarily guarantee on-site resident space. Daily passes included with the space rental will be reduced by five for each on-site resident exhibitor (refer to form)

9. **ADVERTISING**

The Ontario Plowmen's Association and the International Plowing Match and Rural Expo, in co-operation with BETTER FARMING, will be printing the **Show Guide** and exhibitor listings to promote the event and its exhibitors. Those Exhibitors not wishing to have their name and/or contact information listed should send their requests in writing to the Ontario Plowmen's Association at the time of submitting their application.

10. SITE PROTECTION

- Increased Site Protection will commence at Noon on Thursday, September 11th until Noon on Monday, September 22nd inclusive.

The OPA and the IPM assume no responsibility for the site protection of any exhibitor's property or contents in their exhibit area.

11. ON-SITE RESIDENTS

On-Site residents: Potential on-site residents must apply as a very limited number of spaces for on-site residents will be possible this year. Submitting this Permission Request application will not necessarily guarantee on-site resident space. Daily passes included with the space rental will be reduced by five for each on-site resident exhibitor.

- Potential On Site residents available only for a limited number of Food Vendors and large Outdoor Exhibitors (not available to Indoor Exhibitors. **Tents are not allowed.**
- **Generators are not allowed.**
- Exhibitors approved to reside on-site must forward a list of the occupants to the OPA by September 1st
- Residents must be on their site as of 8:00 p.m. unless they have notified the Site Protection Office otherwise. **THIS RULE WILL BE STRICTLY ENFORCED.**
- Daily passes included with the purchase of space will be reduced by five for each On-site Resident-Exhibitor.
- An on-site residency pass will be issued for each occupant.
- An additional charge will apply where the number of on-site residents exceeds the daily pass allotment.
- Those registering after August 1st are required to exchange 5 daily passes for an on-site residency pass or purchase an on-site residency pass at a cost of \$100 (including HST).
- On-site residents are not permitted to walk throughout the Tented City after closing.
- **An on-site resident pass will allow re-admission to Tented City ONLY in the evening. A regular Exhibitor Pass will be required for admission at any other time.**

12. DIGGING ON SITE

Due to the fact that some Hydro Lines and Water Lines are underground at IPM 2025, outdoor exhibitors and food concessions who need to dig holes, move topsoil, or install concrete below grade must receive prior approval. **THIS WORK MUST BE SUPERVISED BY AN EVENT TEAM MEMBER.** The enclosed form must be forwarded to the OPA by August 1st. This form is a PERMISSION REQUEST FORM ONLY. You must make further arrangements with Exhibitor Services to have your work supervised and completed. **The exhibitor is also responsible for work and costs to return their site to the original condition. YOUR LOT must be returned to the condition in which you first found it.**

13. FORKLIFT SERVICE

A forklift service will be available from 8 am to 5 pm, September 9 to September 30. For service outside these hours, special arrangements will have to be made, for which a charge will apply. If unique requirements for unloading are necessary, please call in advance:

**LOCAL COMMITTEE OFFICE email - ipm2025@plowingmatch.org
OR Phone - 613-697-5209**

14. STORAGE

There will be a designated storage area for exhibitor vans and trailers.

15. MOVE OUT

- NO EXHIBITOR may commence dismantling or moving out any exhibit or part thereof prior to 5:00 p.m. on Saturday, September 20th, 2025.
DUE TO THE INCREASED RISKS OF ACCIDENTS TO OUR EXHIBITORS AND VISITORS, NO EXHIBITOR IS ALLOWED TO LEAVE PRIOR TO 5:00 P.M. ON CLOSING DAY.
- Exhibitors are totally responsible for dismantling and moving out their exhibits. Exhibitors must remove all items they bring to the site. This includes ALL GARBAGE AND ALL CARDBOARD BOXES. IF GARBAGE IS LEFT ON YOUR DISPLAY LOT, A REMOVAL CHARGE WILL APPLY.

16. SERVICES

- Ontario Plowmen's Association Show Office, IPM Local Committee Office and Tented City/Exhibitor Services will be located near the Service Entrance (GATE 5).
- First aid and Emergency Services will be located near the Service Entrance.

17. ELECTRICAL SERVICES

See the electrical order form enclosed for regulations.

Please Note: NO Generators allowed on the site. (Exception: Building construction prior to show opening).

18. TENTS

The official tent supplier is:

**Premier Event Tent Rentals
10 Carson Court, Brampton, Ontario L6T 4P8
Office: 416-225-7500
Paul Usher: 647.966.3146**

During the IPM, they will be located on-site in the Service Area (near the Inventory Storage Containers). See enclosed order form.

Exhibitors who own their tents may erect same (you are also responsible for your own Building Permit Application, Tent maintenance and Tent removal). Exhibitors who do not own their own tents, must order from the Premier Event Tent Rentals.

- All tents must be approved by the Fire Inspector and conform to the Ontario Building Code. Please Fill out the enclosed form.
- All tents must have fire extinguishers and be in compliance with the Fire Code

Section 2.9 Tents and Air-Supported Structures

2.9.1.1 Tents and air-supported structures shall be in conformance with the Building Code.

Flame proofing treatment

2.9.2.1. Flame proofing treatments shall be renewed as often as necessary to ensure that the material will pass the match flame test in NFPA 701, "Standard Methods of Fire Tests for Flame-Resistant Textiles and Films".

Combustible materials

2.9.3.1 Hay, straw, bark, shavings or similar combustible materials other than that necessary for the daily feeding and care of animals shall not be permitted within a tent or air-supported structure used for an assembly occupancy, except that sawdust and shavings may be used if kept damp.

Smoking and Open Flames

2.9.3.2 Smoking and open flame devices shall not be permitted in a tent or air supported structure unless provisions have been made for such activities under the fire safety plan.

Fire alarm system or firewatch

2.9.3.3 (1) Despite Article 2.9.1.1., if a tent or air-supported structure does not have a fire alarm system that conforms to the Building Code,

- (a) it may have an approved fire alarm system that does not conform to the Building Code where the reliability and performance of the system will provide an adequate early warning level, or
- (b) a person shall be employed for firewatch duty.

2.9.3.4

(1) A person employed for firewatch duty in accordance with Article 2.9.3.3. shall:

- a) be familiarized with all safety features, including the fire safety plan as provided in conformance with Section 2.8 and the condition of exits, and
- (b) patrol the area to ensure that the means of egress are kept clear and that regulations are enforced.

19. DISPLAY SUPPLIES

For exhibit furnishings (i.e. tables, chairs , etc.): Contact the OPA Office, Guelph at 519-767-2928.

20. Equipment Rental Companies in the area include:

Please contact:

LOCAL COMMITTEE OFFICE email - ipm2025@plowingmatch.org
OR Phone - 613-697-5209

21. For Plants, landscaping material, etc.:

Please Contact the Ontario Plowmen's Association Office at 519-767-2928

OR

Landscaping Committee Chair: Maren Nimec at 905-906-1567

22. INTERNET SERVICE

For information concerning internet service, please contact:

LOCAL COMMITTEE OFFICE email - ipm2025@plowingmatch.org
OR Phone - 613-697-5209

23. OFFICIAL SUPPLIER OF DEBIT/CREDIT MACHINES

Moneris Solutions
Cecile Chen | IB Sales Consultant
Toll Free 1-877-825-0361 ext. 4086
Email: cecile.chen@moneris.com

24. PORTABLE FACILITIES

The co-ordination of all portable toilets in Tented City (and RV Park) is through Chantler's Environmental Services Ltd. 1-800-265-3384. In order to maintain a high level of sanitation, exhibitors requiring a portable on their own site are required to obtain these services through this provider.

Additional rentals available through Chantler's Environmental Services:

\$410 per grey water tank (includes one pump-out per day, evenings only) –

Food Vendors order via the Food Vendor Application form.

\$80 for additional pumping

\$250 per single cold-water sink

\$350 per single heated water sink

25. INSURANCE

All exhibitors must provide the OPA with proof of insurance, as outlined under the Terms and Conditions herein (#12). **The certificate must confirm that the Ontario Plowmen's Association and the 2025 International Plowing Match and Rural Expo Local Committee Inc. have been added as an additional insured.** As an alternative to your carrier, The Co-operators Insurance Company is offering coverage to IPM exhibitors at very reasonable rates through the Duuo Vendor Insurance program (details enclosed).

26. CONSTRUCTION MATERIALS

Displays may be constructed using steel, aluminium, glass, wood, plastic, etc. and any other non-combustible material as regulated by the Ontario Building Code. Combustible materials, including plastics, must have a flame spread rating not exceeding 150 and a smoke developed classification not exceeding 300. Aluminium nails and screws are not to be used in the construction of buildings. **All materials including nails and screws must be removed from the site following the close of the show.**

27. GARBAGE REMOVAL

All exhibits must be kept and maintained in a clean and orderly condition throughout the event and all waste, recyclables and unnecessary material must be removed by the exhibitor and placed at the back of your display (for Outdoor Exhibitors) no later than 6:00 p.m. each day. In an effort to recycle as much as possible, please ensure that you follow the garbage sorting requirements including the use of the recycling containers. Indoor Exhibitors must use the garbage and recycling containers within your tent/building.

28. DELIVERIES

PREPAID small shipments will be accepted at the O.P.A. Site Office located near the Service Entrance. All deliveries must be clearly marked indicating the Exhibitors' name and location number in Tented City.

Ontario Plowmen's Association,
c/o West Niagara Fairgrounds,
7402 Mud St. W., **GATE 5**
Grassie, Ontario
L0R 1M0
519-767-2928

Delivery Trucks will be permitted and escorted to the exhibitor lot between the hours of 7:00 a.m. to 8:30 a.m. and 5:30 p.m. to 6:00 p.m. during show days. Any deliveries required other than the times specified must be pre-approved by Site Protection and the OPA Management. Site Protection rules are for everyone's benefit, please co-operate.

29. SOLICITING

Soliciting is permitted only within the confines of your display area. Exhibitors, including food vendors, are not permitted to distribute and/or post any advertising and promotional materials except within the space leased by the Exhibitor. The advertising and promotions of the name and/or business other than that on the exhibitors' contract application is prohibited. Exhibitors must conduct their business in a neat and orderly manner, totally within the confines of their exhibit space and in such a way as to not conflict with other exhibitors. Salespeople and demonstrators are prohibited from operating on streets, aisles or elsewhere on the site. **The use of amplifiers to solicit is prohibited.**

30. CONTESTS AND PROMOTION

Contests and promotions, including complimentary food and drink, must be pre-approved by the Ontario Plowmen's Association (form enclosed). Contests, draws and like promotions conducted by Exhibitors in conjunction with their displays shall be of a clear-cut nature, and free of any obligation to the winner. The award or awards, and the terms of same, must be clearly stated on the entry/ballot. Awards which are conditional upon placing of an order, or which represent a credit to be applied as part of payment or an order, is not permissible. All food and drink must be pre-approved by the Local Health Unit.

Any lottery licenses, etc. that are required are strictly the responsibility of the exhibitor.

31. SOUND SYSTEMS

The use of live bands, recorded music, amplifiers, public address systems, etc. must be pre-approved by OPA Management (see enclosed request form). Exhibitors displaying or demonstrating mechanical devices or any apparatus capable of motion and/or noise must regulate their operation. Exhibitors using video and sound equipment must contain sound within their own exhibit. OPA Management reserves the right to control sound in the event it becomes a nuisance to adjoining exhibits.

TERMS AND CONDITIONS

ASSIGNMENT AND SUBLETING

1. The exhibitor agrees not to assign the exhibit contract agreement or any of the benefits provided herein, in whole or in part, without the express written consent of the Ontario Plowmen's Association (OPA). Consent may be granted or withheld and is at the sole discretion of the OPA. Any such disposition or attempt thereafter shall forthwith render this entire Agreement null and void. **Further, the exhibitor agrees not to sublet any part of its exhibit area to any other manufacturer, distributor, company or person.**
2. The exhibitor agrees to use the said space solely for the display and/or sale of its product(s) and/or service(s) manufactured, distributed or produced by the said exhibitor.
3. The exhibitor agrees that only name(s) displayed in the said exhibit space shall be those of the exhibitor's company, its principals and their product(s) and/or services(s).
4. The exhibitor agrees that the OPA may relocate or remove the Exhibitor when in the sole opinion of the OPA that such a move is necessary to maintain the character and/or good order of the Show.
5. All property of the exhibitor on display and for sale shall be at the sole and only risk of the exhibitor. The exhibitor is responsible at its cost for all insurance coverage related to participation in the Show.

COMPLIANCE AND CONDUCT

6. In case the exhibitor shall fail or refuse forthwith to comply with the orders or requests of the Management as herein provided, or in case the exhibitor shall permit any conduct, act or thing which in the sole opinion of the Management is vulgar or improper, or which in the sole opinion of the Management renders it advisable that the exhibitor should not be allowed to continue carrying on business under this Agreement, or in case the exhibitor shall fail to comply with, observe and perform the terms, provisions, covenants and conditions herein contained, and agree to, then and in any case the Management may forthwith terminate this Agreement and take possession of the space hereby assigned to the exhibitor. And, at the cost of the exhibitor remove him and all property there from, by force if necessary, and in that event neither the OPA nor the Management nor any of its officers or agents be liable in damages or otherwise, by reasons of such termination, closing or removal. The exhibitor hereby expressly waives and forever releases the OPA from all claims and demands of every nature arising out of matters contained in this section 6.
7. The exhibitor shall at all times be subject to and strictly comply with the Rules and Regulations, Terms and Conditions and General Information of the OPA and/or of the Management now in force hereafter given or passed, for the maintenance of order, the soliciting of any person or persons to buy, or the hawking or crying or announcing of any articles for sale, and shall see that all exhibitor's employees are at all times cleanly and neatly clad and orderly and polite in their conduct and speech, and that the space covered by this Agreement is kept perfectly clean. The exhibitor shall take special care not to permit the accumulation of rubbish, waste or paper or other combustible substances

within the space included in this Agreement. The OPA or Safety Inspector shall at all times have the right to enter upon and inspect the space allotted to the exhibitor, by force if necessary.

8. The exhibitor agrees to abide by all the Terms and Conditions, Rules and Regulations and General Information adopted by the Ontario Plowmen's Association in the best interest of the OPA, and further, the exhibitor agrees that the OPA shall have the right to adopt and/or amend any new rule and regulation, deemed necessary prior to and during the Event.

9. Any violation of the Terms and Conditions and Rules and Regulations and General Information of this Agreement will give the OPA the right to cancel this Agreement and expel the exhibitor. The exhibitor shall not occupy the exhibit space and further shall forfeit all payments made to date.

10. **Full payment must be received before exhibits may be set up.** In the event the exhibitor fails to make payment of the exhibit space, the OPA will have the right to sell the said exhibit space and the contents thereof at public or private sale. The exhibitor shall be liable for any deficiency or loss suffered by the OPA.

11. INDEMNITY AND HOLD HARMLESS

a) The exhibitor shall use and occupy its said exhibit space in a careful, safe, lawful and proper manner and shall so conduct its activities as not to endanger any property or any reason therein and with the sole exception of claims arising entirely by reason of Act of God, shall indemnify and save harmless the OPA against any and all claims and costs of the OPA or of other persons arising in any way out of the performance of this Agreement by the exhibitor or that of the exhibitor's occupation of the said exhibit space unless caused by the negligence of the OPA.

b) The EXHIBITOR hereby releases the OPA from any and all liability to any person (including the exhibitor and third parties) for any loss, damage, injury to any person or property incurred in or upon the said exhibit space unless caused by the negligent act of the OPA.

c) I) Unless caused by the negligence or deliberate act or omission of the OPA, the OPA shall not be liable for any damage caused by any person or to any property. Without limiting the generality of the foregoing, "damage" shall include personal injury and death; "person" shall include the exhibitor, agents, employees, contractors, independent contractors, guests, patrons and any other person in the buildings or on the grounds.

II) Notwithstanding any eventuality, including the cancellation of the Show, and under no circumstances shall the OPA be liable to the exhibitor or any other person as herein defined for loss of business or loss of profit.

III) Under no circumstances shall the OPA be liable to the exhibitor or any person herein defined for theft, and subject Clause II C) I) above: breakage, damage by steam, water, wind, rain, snow or ice damage resulting from electricity, wiring, heating, ventilating, air conditioning, freon, ice making gases, elevating devices, stairs, seating or from any of the electrical or mechanical equipment or any structural element of the buildings.

IV) Under no circumstances shall the OPA be responsible for any damage caused directly or indirectly by another tenant, by the exhibitors or by another person as defined.

V) The exhibitor acknowledges that it has inspected the premises and that it is in satisfactory condition. Any defect, wrongful act, disturbance, dangerous circumstances or other circumstances shall be brought to the OPA's attention prior to the Event and in any event immediately.

VI) The OPA shall not be liable for any loss or damage sustained by the exhibitor resulting directly or indirectly from the entrance and exit gates to the grounds being closed for any reason or cause at any time during the time of this Agreement and Event, nor shall the OPA be liable for the loss or injury to any property, goods or effects of the exhibitor due to any cause whatsoever.

VII) The OPA will not be liable for the fulfillment of this Agreement as to delivery of the licensed exhibit space if non-delivery is due to fire, lightning, windstorm, flood, earthquake, explosion, act of public enemy, public health restrictions, authority of law or any cause beyond the control of the OPA.

12. INSURANCE

a) The exhibitor, at its cost, shall procure and maintain in full force and effect during the time of this Agreement, a comprehensive general liability insurance policy with a combined single limit of not less than **TWO MILLION DOLLARS (\$2,000,000)** for bodily injury or death and for property damage. The policy will include the following:

Comprehensive General Liability of \$2,000,000

- **Bodily Injury and Property Damage Liability subject to a maximum \$1,000 Deductible.**
- **Products and Completed Operations Liability**
- **Contingent Employers Liability**
- **Broad form Property Damage**
- **Cross Liability Clause**
- **Severability of Interest Clause**

Further, the exhibitor shall submit with their exhibitor application a certificate from their Insurance Company naming "The Ontario Plowmen's Association" and "2025 International Plowing Match and Rural Expo Local Committee Inc." as additional insured under such policy and will not be cancelled or materially altered without at least thirty (30) days prior written notice to the OPA. The exhibitor will have such certificate in their possession and may be asked for proof of insurance at any said time before, during or after the event.

The exhibitor will not be permitted to move-in and/or set up the said exhibit without proper insurance coverage and evidence thereof.

The exhibitor shall provide such additional limits and extensions of coverage as may be reasonably required by the OPA hereafter.

The exhibitor shall not do or permit to be done anything in or upon any position of its exhibit space or bring or keep anything therein or upon which will in any way increase any rate of insurance upon the exhibit space or property therein, and if any insurance rate shall be

increased as aforesaid, the exhibitor shall forthwith on demand pay to the OPA, as an additional cost, the amount by which the insurance premiums shall be increased. Insurance policies may be examined. The OPA and the exhibitor hereby waive notice of the provisions of any such policy of insurance.

The exhibitor hereby waives on behalf of the exhibitor's insurance carriers, all rights of subrogation that any such insurance carriers may have against the OPA, its officers, servants and agents by reason of any matters, cause, claim or thing whatsoever.

In the event of a claim, notice must be given to the Ontario Plowmen's Association and the 2025 International Plowing Match and Rural Expo Local Committee Inc.

13. LICENCES AND FEES

The exhibitor agrees, at its cost, to obtain all necessary licenses and official permits for the purpose of carrying out the provisions of its agreement.

14. The exhibitor agrees to abide by the Ontario Electrical Safety Code, Ontario Regulation 794/80, which requires that all electrical equipment must be approved before it is lawfully advertised, displayed, offered for sale, sold or otherwise disposed of or used in Ontario. This includes electrical merchandise as well as lighting and display equipment.

15. No exhibitor shall display and/or sell any articles relating to or bearing the logo of the Ontario Plowmen's Association or local committee without first obtaining written approval from the OPA.

16. NO PETS POLICY

- **Due to increasing concerns relating to health and safety as well as legal liability issues involving dogs and the general public, OPA has adopted a policy which prohibits pets in areas open to the general public (specifically in tented city, plow fields and parking areas.) The names of kennels will be provided at the Admission Gates and the information kiosks for visitors who do arrive at the IPM with a pet.**

- Residents in The RV Park who bring their pets are required to keep them within the confines of the RV Park area. Exhibitors who bring their pets to the IPM are required to keep them out of view and away from the general public during show hours.

- This policy does not apply to Service Dogs, or animals brought in as part of an exhibitor special event.

- See also item 12, insurance requirements.

17. ANIMAL CARE POLICY

The highest standards of nutrition, health, sanitation and safety shall be enforced at all times. Adequate provision must be made for ventilation, feeding and watering throughout the event. All handling, housing and veterinary treatment must ensure the health and welfare of the animals.

Owners/handlers are responsible for providing adequate provision for extreme weather conditions (i.e. rain, extreme heat, etc.). Owners/handlers are responsible for ensuring proper restraint of animals and the overall maintenance of pens, cages and viewing areas as they relate to public safety.

All animals must be free of contagious and infectious diseases. Standard health management is mandatory. Proof of vaccinations may be required.

Effective July 1st, 2018, the Ontario Ministry of Health and Long-Term Care has made changes to the RABIES immunization requirements for animals in Ontario. Please check with your Local Health Unit or your Veterinary to see if these rule changes affect the animals you will be bringing to the International Plowing Match and Rural Expo.

Animals may be subject to veterinary inspections. In the event any deficiencies are found, the owner/handler will be responsible for removing the animal(s) from the IPM site.

All government rules and requirements must be met in regard to animals being allowed at the International Plowing Match and Rural Expo.

The Ontario Plowmen's Association does not endorse nor recommend "The Exhibitors Fair Guide" published in Austria. At no time has Exhibitor Information been supplied to this publication.

ARTISAN / QUILT VENDOR EXHIBITS

(In Building/Tents Co-ordinated by the OPA/IPM)

SPACE RENTALS

Artisan booths are 10' (frontage) x 10' (depth).

- **Space MAY NOT be sublet.**
- **No Generators are allowed.**
- **Hydro is not included with the space and must be purchased separately.**
- **REMINDER: Backdrop curtains along Tent/Building Walls will NOT BE PROVIDED.** Three-foot side curtains (or similar) between exhibit displays will be supplied. Any drapery requirements beyond those that may be supplied by the Ontario Plowmen's Association, will be at the cost of the Exhibitor. (Please contact the OPA Office for recommendations.)
- No furnishings (e.g., tables or chairs) or floor cover are supplied. These are the responsibility of each exhibitor.
- All exhibitor placements will be allocated by OPA management. Exhibitors purchasing a minimum of 20' frontage will be considered for a corner location.
- In 2025, Artisan exhibitors will be placed in a large tent with a grass floor. Quilt vendors will be placed in a building with the quilt displays, space permitting.
- Pop-up tents are not allowed in any buildings on the West Niagara Fairgrounds.

SPECIFICATIONS

- All exhibit booths, displays, signage, decorations and products **MUST** be totally contained within the space allocated i.e., 10 feet frontage x 10 feet depth x 8 feet high. The side perimeter must not exceed a height of 3 feet for a distance of 6 feet from the front. If you are in doubt, ask for clarification **BEFORE** designing or erecting your booth.
- **Artisan Items MUST be HAND CRAFTED and ONE OF A KIND. NO RESALE ITEMS.**
- **NO FOOD sampling or sales in Artisan or Quilt Vendor booths.** (Vendors with packaged food/beverage products, please use the Indoor/Outdoor application for Retail space. If you will be preparing any food/beverage at the event, please complete the Food Vendor application.)

If you are interested in being an Indoor/Outdoor Exhibitor or a Food Vendor (instead of an Artisan or Quilt Exhibitor), please contact the Ontario Plowmen's Association for an application.

- All exhibit booths, displays, signage and decorations must pass all fire and safety inspections. They should be prefabricated, pre-fitted and ready for set-up and installation upon arrival.
- All booths and decorations must adhere to Fire Code Standards. As stated in **Section 2.3--- Interior Finishings, Furnishings and Decorative Materials**

Decorative Materials:

2.3.2.1 (1) Drapes, curtains and other decorative materials, including textiles and films used in buildings, shall meet the requirements for a high degree of flame resistance as described in NOTE 4 of Test Method 27.1 of CAN2-4.2, "Textile Test Methods", when such drapes, curtains and other decorative materials are used in:

(c) any access to exit in a Group 'A' occupancy, and assembly occupancies with an occupant load of more than 100 persons, or

(d) any open floor area in a Group 'D', 'E' or 'F' occupancy exceeding 1500 square metres, except, when the floor area is divided into fire compartments not exceeding 1500 square metres in area and separated from the remainder of the floor area by fire separation having a 1 hour-fire-resistance rating.

- No combustible products may be used. Gas, propane and open flames are prohibited.

MOVE-IN AND SET-UP:

- Move-in on Sunday, September 14 or Monday, September 15 (8 am to 6:30 pm).
- Increased site protection begins on Thursday, September 11, 2025 at noon and continues until noon on Monday, September 22, 2025 at noon.
- ALL exhibitors must have their exhibits completely set up and ready for inspection by Monday, September 15, 2025 at 5 pm. With the rare exception, Artisan/Quilt Exhibitors need not be present at their display for the Inspections.

MOVE OUT

DUE TO THE INCREASED RISKS OF ACCIDENTS TO OUR EXHIBITORS AND VISITORS, NO EXHIBITOR IS ALLOWED TO LEAVE PRIOR TO 5 PM ON CLOSING DAY.

- All exhibits should be removed on Saturday, September 20 (after 5 pm) and must be removed no later than Noon on Sunday, September 21, 2025.
- All garbage must be removed and/or placed in the garbage bags provided.

Additional charges will apply to those leaving garbage, including cardboard boxes.

Please contact the Ontario Plowmen's Association Office if you have any questions:
admin@plowingmatch.org 519-767-2928 1-800-661-7569



September 16 to 20, 2025



We Welcome You to the
2025 INTERNATIONAL PLOWING MATCH AND RURAL EXPO (IPM)
Grassie, Township of West Lincoln, Region of Niagara
7402 Mud St W (Gate 5), Grassie, ON L0R 1M0





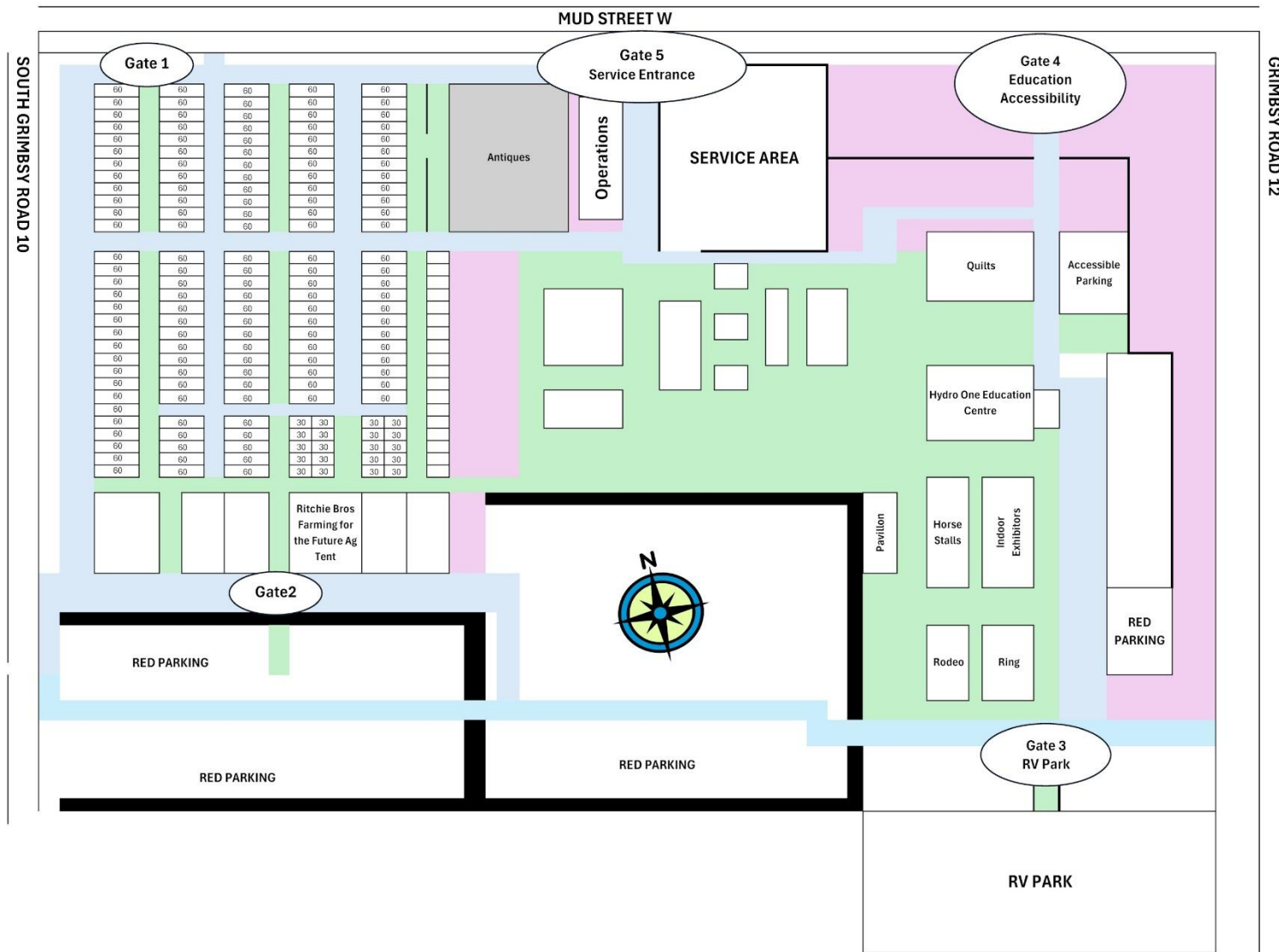
2025 International Plowing Match and Rural Expo

September 16 to 20, 2025
Grassie, Township of West Lincoln,
Region of Niagara



TENTATIVE TENTED CITY MAP

Tented City Address: 7402 Mud St W (Gate 5), Grassie, ON L0R 1M0



Subject to Change | Not to Scale | The tentative Tented City Map is provided only for general reference.

www.plowingmatch.org/ipm2025



188 Nicklin Road, Guelph, Ontario N1H 7L5 • 519-767-2928 • 1-800-661-7569 • fax 519-767-2101

www.plowingmatch.org

Re: Certificate of Liability Insurance

All exhibitors & vendors participating in the 2025 International Plowing Match and Rural Expo must have adequate Liability Insurance with a minimum \$2,000,000 limit. The Ontario Plowmen's Association insurance policy does not extend coverage to any exhibitors and requires you to submit a Certificate of Insurance or receive coverage through the Duuo Vendor Insurance programme for IPM exhibitors (<https://duuo.ca/vendor-insurance/plowing-match/>).

IF USING YOUR INSURANCE COMPANY, ASK YOUR INSURANCE COMPANY TO PREPARE YOUR CERTIFICATE OF INSURANCE TO INCLUDE THE FOLLOWING:

1) Additional Insured under policy:

Ontario Plowmen's Association and the
2025 International Plowing Match and Rural Expo Local Committee Inc.
188 Nicklin Road, Guelph, Ontario N1H 7L5

2) Event name: 2025 International Plowing Match and Rural Expo

3) Policy number, Policy Effective Date and Policy Expiration Date

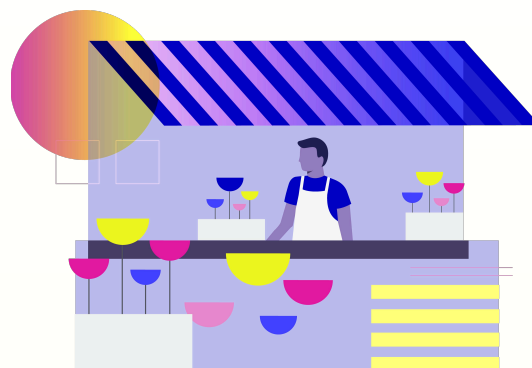
4) The exhibitor, at its cost, shall procure and maintain in full force and effect during the time of this Agreement, a comprehensive general liability insurance policy with a combined single limit of not less than TWO MILLION DOLLARS (\$2,000,000) for bodily injury or death and for property damage. The policy will include the following:

- Comprehensive General Liability of \$2,000,000
- Bodily Injury and Property Damage Liability subject to a maximum \$1,000 Deductible.
- Products and Completed Operations Liability
- Contingent Employers Liability
- Broad form Property Damage
- Cross Liability Clause
- Severability of Interest Clause

**SEND YOUR CERTIFICATE OF INSURANCE
TO THE ONTARIO PLOWMEN'S ASSOCIATION:**
Email: admin@plowingmatch.org Fax: 519-767-2101

Host of the International Plowing Match and Rural Expo

Duuo Vendor Insurance



We've partnered with Duuo by Co-operators, who provides vendors like you access to easy and affordable vendor insurance. Say **goodbye** to pesky service fees and **hello** to coverage you can trust!

Duuo's digital platform allows you to purchase vendor insurance online in minutes, providing **flexible coverage** for the days you'll be exhibiting without any cancellation fees or deductibles.

What's covered?



**\$2 or \$5 million
in liability**

(Bodily injury and property damage)



**Tenants' legal
liability**



**Medical
payments***



**Products-
completed
operations**

*Duuo offers limited coverage for medical expenses incurred. For more detailed information on what's covered, please refer to your policy.

**Get a quote in 2 minutes by visiting
duuo.ca/plowing-match**

To access preferred partner pricing and the coverages above, **search for your event by name** when getting a quote. If you have questions about your policy, contact info@duuo.ca.